

INTENDED USE

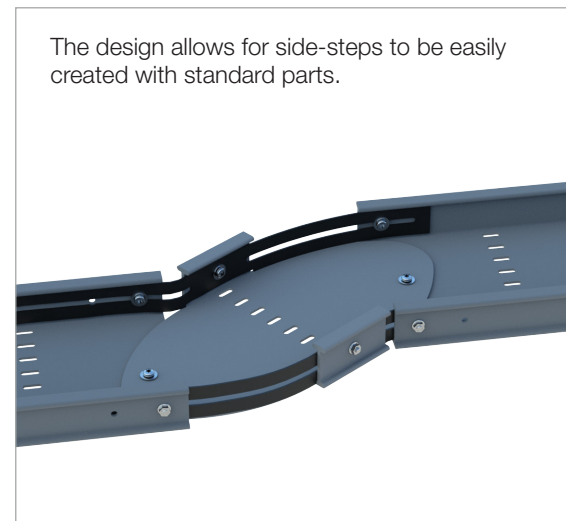
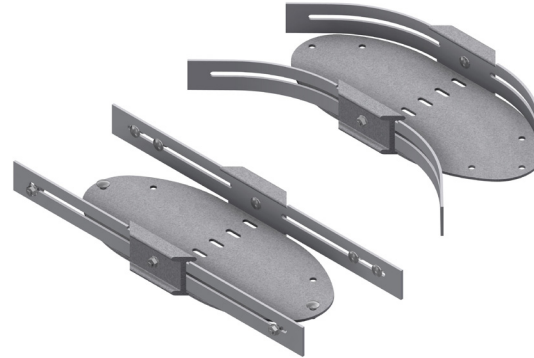
Adjustable Flexi Elbow for horizontal direction changes at any angle from 0-90°. Easily formed by hand.

INSTRUCTION FOR USE

Firstly, fit the inside splice to cable tray using two self-locking bolts. Bend the Flexi Elbow to the required angle(s). Fix the outside splice with one self-locking bolt. Fix the Flexi Elbow to the connecting cable tray using two bolts on the inside splice and one on the outside splice.

Adjust and tighten securely.

Flexi Elbow sides are easily formed by hand to the required angle



The design allows for side-steps to be easily created with standard parts.



The FTE Flexi Elbow Cover suits all angles. The cover from connecting cable trays are fitted over the Flexi Elbow Cover. Use 3 clamps from widths 300 mm and over. Use Hurricane clamp where high wind loadings can occur.

0-90°

