

## INTENDED USE

FRP UNO bracket for connecting FRP UNO sections together.

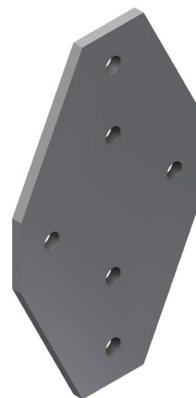
## INSTRUCTION FOR USE

Fix FRP UNO nuts in the channel.

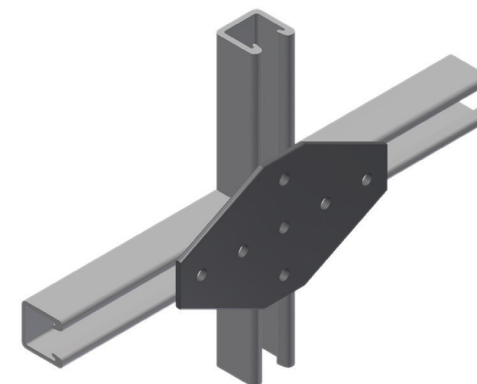
Attach the bracket connecting the sections.

Adjust and tighten securely.

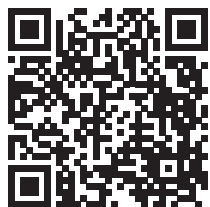
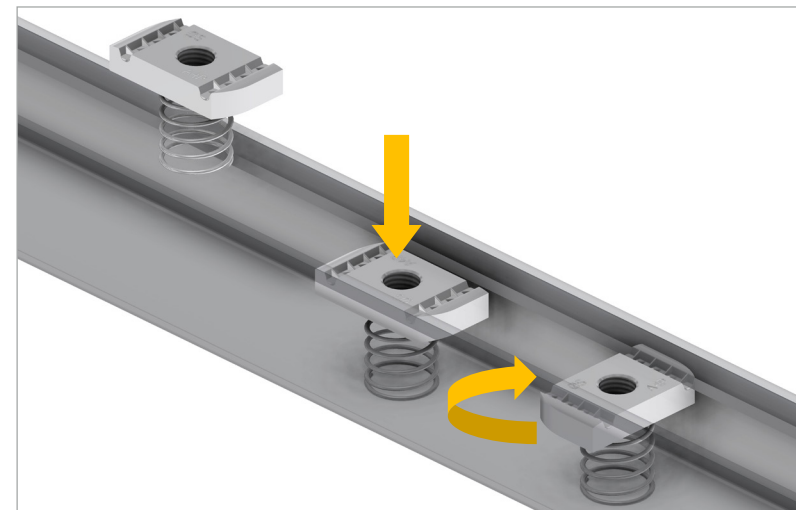
UNO Cross Bracket UNO GP-C-6



Typical installation



Fitting UNO nut with spring



User Guide for Bolts:  
Recommended Torque