

INTENDED USE

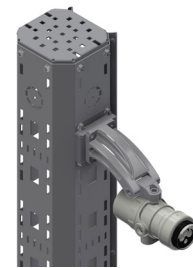
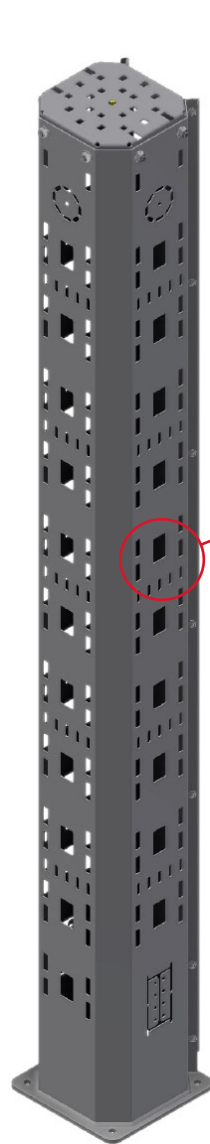
Equipment tower with stable construction designed to withstand vibration in the harshest of climates. Integrated stable design reduces engineering time and on-site fabrication and modification.

INSTRUCTION FOR USE

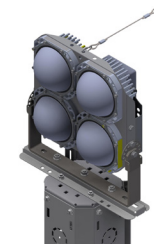
1. Weld the doubling plate structure.
2. Post-paint, attach the main body to the doubling plate using 4xM10 hex bolts, optionally add 4 washers between the main body and the doubling plate to encourage drainage from the bottom of the tower
3. Top Plate and additional equipment is fitted.
4. Cables / pipes are routed. Rubber grommets are available to route cables safely through the tower structure.
5. Add the Back Plate to finish the installation of the Equipment Tower.

Note 1: The Top plate is not included in the Equipment tower assembly and needs to be ordered seperately. The Equipment tower is not to be used without Top plate in order to achieve proper stability.

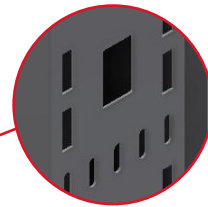
Note 2: The structure the Doubling Plate is welded to needs to be sufficiently strong, and can affect the level of vibration experienced.



Fits most commonly used equipment on body without need of extra brackets



Removable backplate for easy access and installation of internal cable routing. The design features an access hole for bolting equipment without removing backplate,



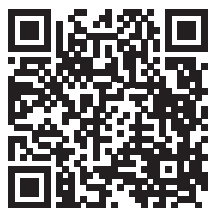
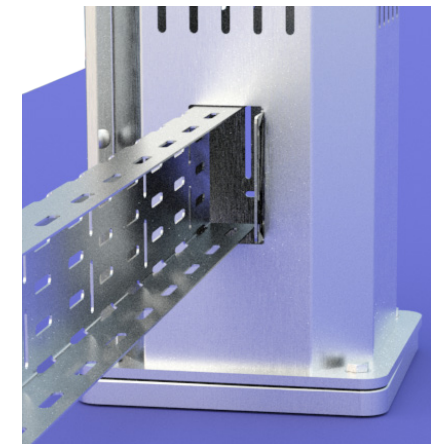
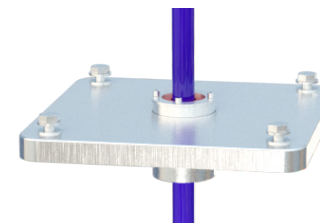
Large holes compatible with edge protector for cable routing through Equipment Tower

ETIN™ compatible hole pattern for direct mounting of tubing clamps

Fixing and opening for 100mm wide cable tray

Bottom plate with holes to fit M10 doubling plate 250x250.

Large centre-hole compatible with Hilti MCT. Doubling plate with MCT available



User Guide for Bolts:
Recommended Torque