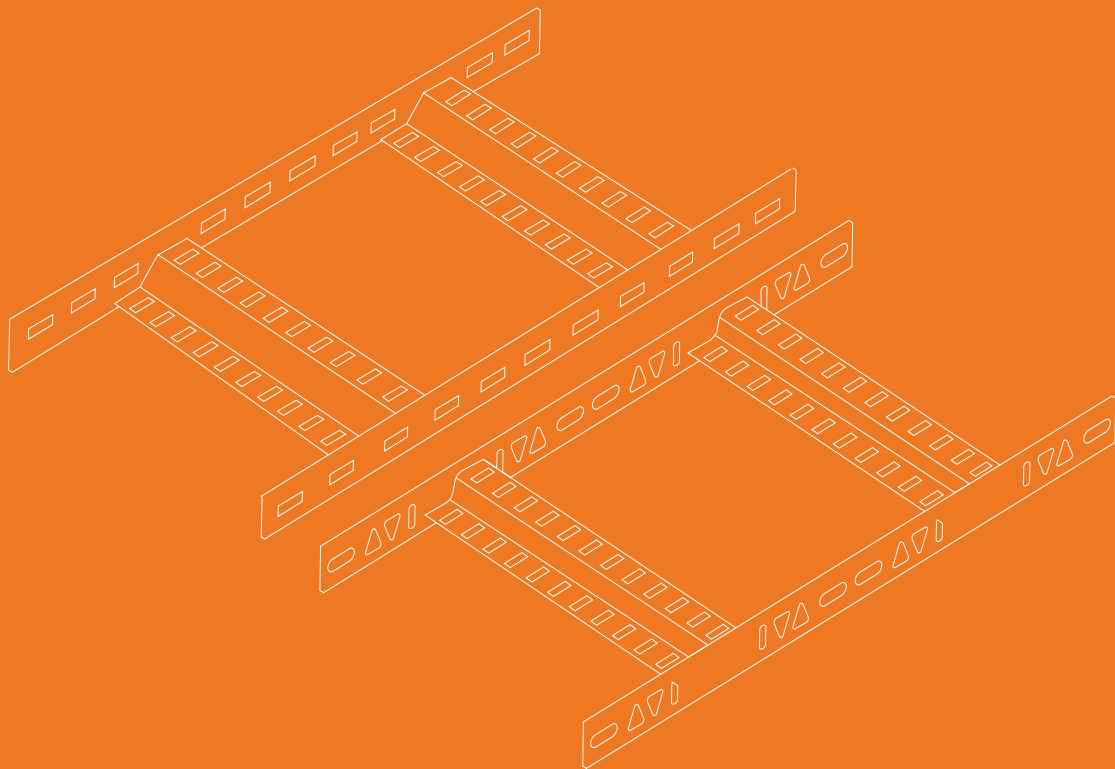




A Group Company of **HILTI**

# RZE Cable Ladder System

*for shipbuilding*

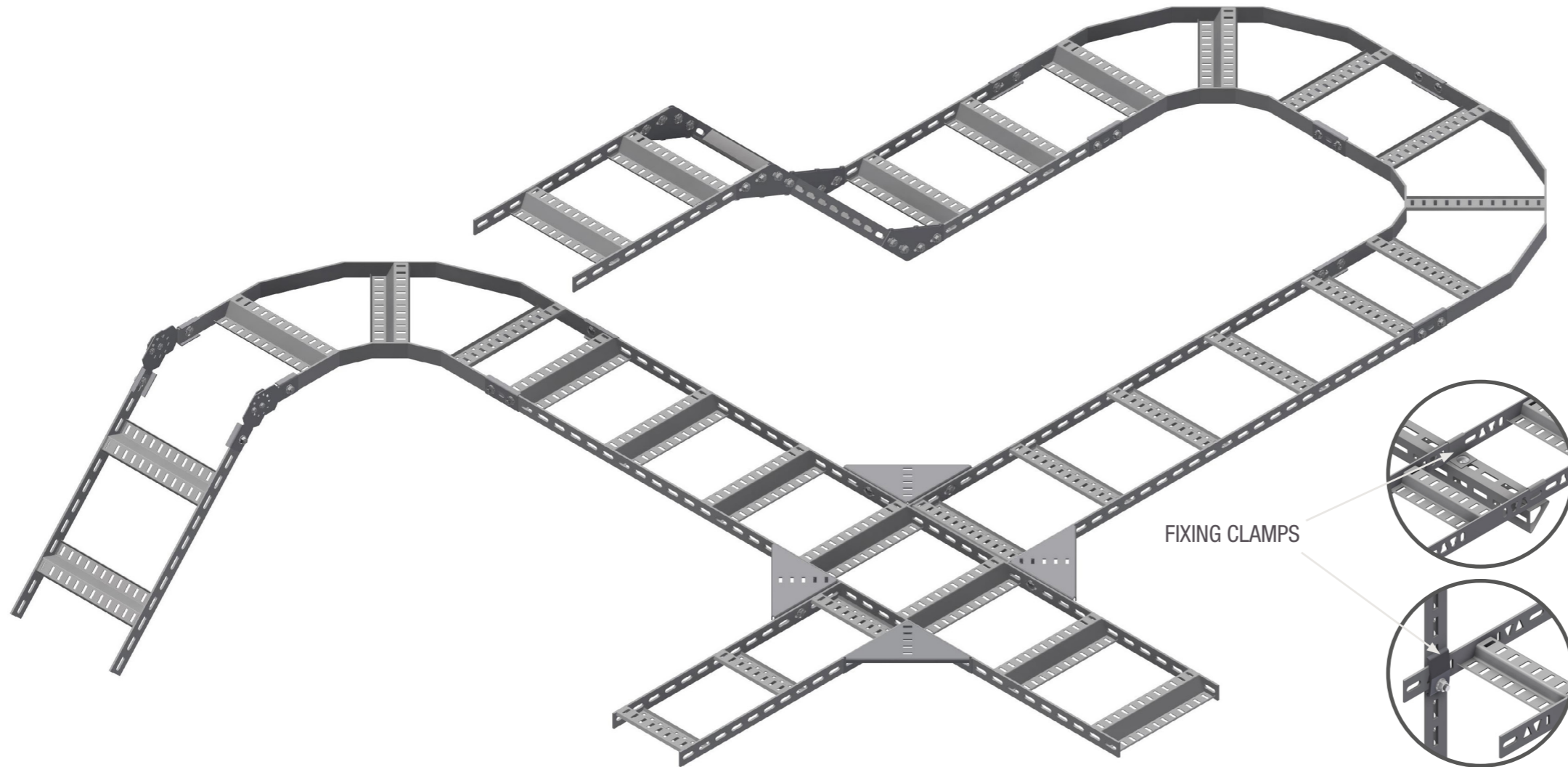


RZE-P

RZE-R

# RZE-P cable ladder system

SS = Stainless Steel (C4, C5-I, C5-M)  
 ZM = Zink Aluminium Magnesium (C3, C4)  
 HDG = Hot Dip Galvanized (C3)  
 PG = Pre-Galvanized (C1, C2)



## LOAD DATA

| RZE-P Ladder | Rail height (mm) | SWL 1.5 m (kg/m) | SWL 2 m (kg/m) | SWL 2.5 m (kg/m) | Material thickness (mm) |
|--------------|------------------|------------------|----------------|------------------|-------------------------|
| SS           | 40               | 200              | 159            | -                | 5                       |
| HDG          | 40               | 260              | 134            | 75               | 5                       |

*SWL = Safe working load. Loading data according to IEC61537. The length of the end span must be reduced to 3/4 of the support spacing and with no splices on the end span.*

## EXIT PLATE

Exit plate for RZE cable ladders. Easy to place on the cable ladder rail, no fasteners needed.

| Type description | SS    | ZM    |
|------------------|-------|-------|
| RZE EX-SI        | 83598 | 84290 |

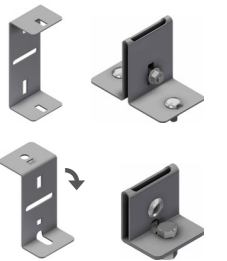


## LIGHT FITTING SUPPORT

Brackets for RZE cable ladders to fit glamox or ceag light fittings.

| Type description | SS    |
|------------------|-------|
| RZE LF-Glamox    | 85618 |
| RZE LF-Ceag      | 83599 |

*Fastener(s) included.*

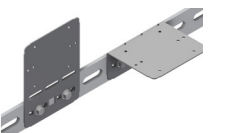


## SOCKET PLATE

Can be easily formed to a 90° angle.

| Type description | SS    | ZM    |
|------------------|-------|-------|
| RZE E+I-EQ-SI-FX | 91683 | 81877 |

*Fastener(s) not included.*



## EDGE PROTECTOR

To protect cables from sharp edges. 50m spool.

| Type description | Art. no. |
|------------------|----------|
| RZE EP           | 84636    |



## JUNCTION PIECE

Junction piece for creating t-pieces and crosspieces.

| Type description | SS    | HDG   |
|------------------|-------|-------|
| RZE JP-TE/CP     | 87973 | 87972 |

*Fastener(s) included.*

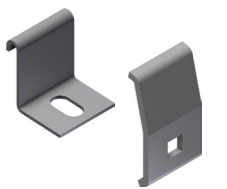


## FIXING CLAMP

Fixing clamps for clamping on the siderail of the cable ladder to fix to support.

| Type description | SS     | HDG     |
|------------------|--------|---------|
| RZE FC-40        | 86876  | 1372099 |
| RZE FC-CH-30/40  | 85503* | 1372098 |

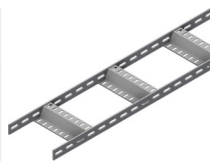
*Fastener(s) included. \*Fastener(s) not included.*



## RZE-P CABLE LADDER

Cable ladder with Z-profiled and slotted rungs. Length = 3m.

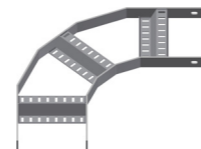
| Type description | SS    | HDG   |
|------------------|-------|-------|
| RZE-P CL-100     | 86819 | 86780 |
| RZE-P CL-150     | 86820 | 86781 |
| RZE-P CL-200     | 86821 | 86782 |
| RZE-P CL-250     | 86822 | 86783 |
| RZE-P CL-300     | 86823 | 86784 |
| RZE-P CL-350     | 86824 | 86785 |
| RZE-P CL-400     | 86825 | 86786 |
| RZE-P CL-450     | 86826 | 86787 |
| RZE-P CL-500     | 86827 | 86788 |
| RZE-P CL-600     | 86828 | 86789 |
| RZE-P CL-650     | 86829 | 86790 |
| RZE-P CL-750     | 86830 | 86791 |
| RZE-P CL-900     | 86831 | 86792 |



## RZE-P FLAT ELBOW 90°

90° flat elbow for the RZE-R cable ladder system. Radius = 200mm.

| Type description | SS    | HDG   |
|------------------|-------|-------|
| RZE-P FE-90-100  | 87665 | 87652 |
| RZE-P FE-90-150  | 87666 | 87653 |
| RZE-P FE-90-200  | 87667 | 87654 |
| RZE-P FE-90-250  | 87668 | 87655 |
| RZE-P FE-90-300  | 87669 | 87656 |
| RZE-P FE-90-350  | 87670 | 87657 |
| RZE-P FE-90-400  | 87671 | 87658 |
| RZE-P FE-90-450  | 87672 | 87659 |
| RZE-P FE-90-500  | 87673 | 87660 |
| RZE-P FE-90-600  | 87674 | 87661 |
| RZE-P FE-90-650  | 87675 | 87662 |
| RZE-P FE-90-750  | 87676 | 87663 |
| RZE-P FE-90-900  | 87677 | 87664 |



## SPLICE CONNECTOR

Two splice connectors required for each connection.

| Type description | SS    | HDG   |
|------------------|-------|-------|
| RZE SC           | 82873 | 85516 |

*Fastener(s) included.*



## RISER BRACKET 45°

Bracket for forming riser. Supplied in pairs.

| Type description | PG    |
|------------------|-------|
| RZE SA-VE-45     | 81769 |

*Fastener(s) included.*



## HINGE VERTICAL

Two hinges required for each connection. Can be adjusted in 4° steps.

| Type description | SS    | HDG   |
|------------------|-------|-------|
| RZE HI-VE        | 85490 | 81575 |

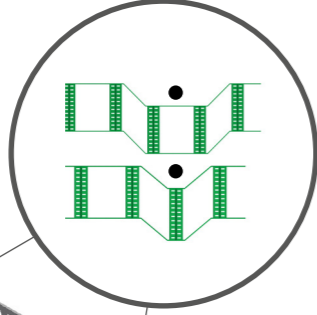
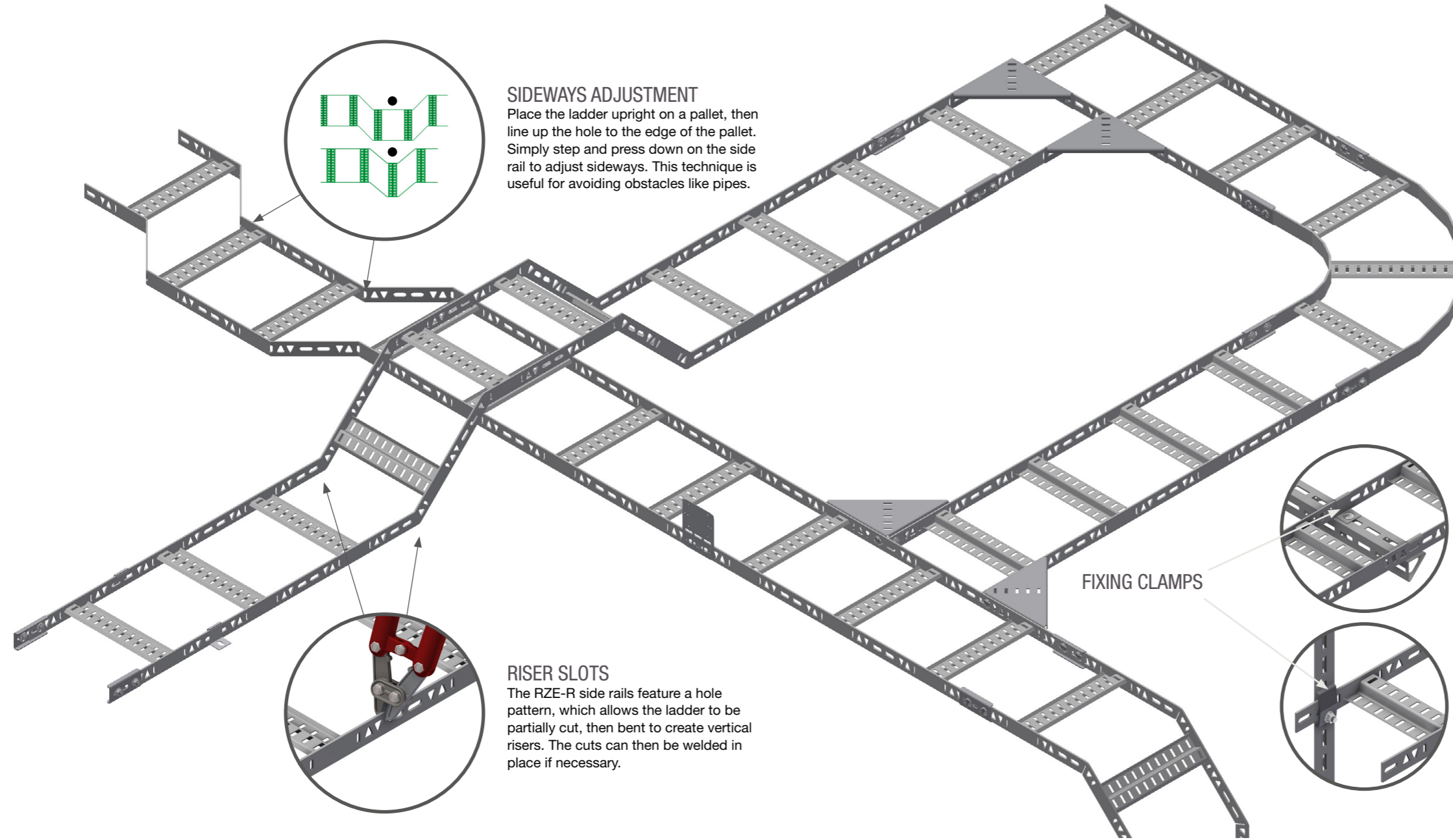
*Fastener(s) included.*



Please note! Whilst every effort has been made to ensure the accuracy of the content, our systems and products are under continual improvement and development, therefore we reserve the right to make changes to products or specification without prior notice. Product graphics are intended to be representative, however small differences in actual products may occur.

# RZE-R cable ladder system

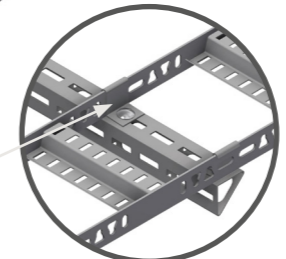
SS = Stainless Steel (C4, C5-I, C5-M)  
 ZM = Zink Aluminium Magnesium (C3, C4)  
 HDG = Hot Dip alvanized (C3)  
 AL = Aluminium (C4, C5-I, C5-M)



**SIDWAYS ADJUSTMENT**  
 Place the ladder upright on a pallet, then line up the hole to the edge of the pallet. Simply step and press down on the side rail to adjust sideways. This technique is useful for avoiding obstacles like pipes.



**RISER SLOTS**  
 The RZE-R side rails feature a hole pattern, which allows the ladder to be partially cut, then bent to create vertical risers. The cuts can then be welded in place if necessary.



**FIXING CLAMPS**

## LOAD DATA

| RZE-R Ladder | Rail Height (mm) | SWL 1.5 m (kg/m) | SWL 2 m (kg/m) | SWL 2.5 m (kg/m) | Material thickness (mm) |
|--------------|------------------|------------------|----------------|------------------|-------------------------|
| SS           | 40               | 188              | 137.5*         | 87               | 3                       |
| HDG          | 40               | 184              | 102            | 56               | 4                       |
| AL           | 40               | 126              | 99             | N/A              | 5                       |

SWL = Safe Working Load.  
 Loading data according to IEC61537. The length of the end span must be reduced to 3/4 of the support spacing and with no splices on the end span. \*Derived from the interpolant between 1.5 m and 2.5 m.

## EXIT PLATE

Exit plate for RZE cable ladders. Easy to place on the cable ladder rail, no fasteners needed.

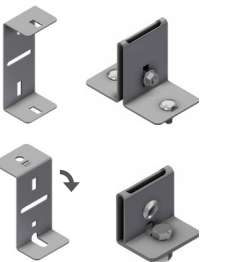
| Type description | SS    | ZM    | AL  |
|------------------|-------|-------|-----|
| RZE EX-SI        | 83598 | 84290 | N/A |



## LIGHT FITTING SUPPORT

Brackets for RZE cable ladders to fit glamox or ceag light fittings.

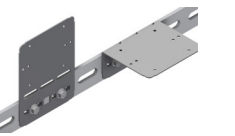
| Type description | SS    | ZM  | AL  |
|------------------|-------|-----|-----|
| RZE LF -Glamox   | 85618 | N/A | N/A |
| RZE LF-Ceag      | 83599 | N/A | N/A |



## SOCKET PLATE

Can be easily formed to a 90° angle.

| Type description | SS     | ZM     | AL    |
|------------------|--------|--------|-------|
| RZE E+I-EQ-SI-FX | 91683* | 81877* | 87028 |



## EDGE PROTECTOR

To protect cables from sharp edges. 50m spool.

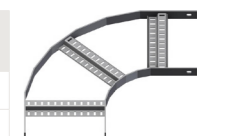
| Type description | Art. no. |
|------------------|----------|
| RZE EP           | 84636    |



## FLAT ELBOW 90° RZE-R

90° flat elbow for the RZE-R cable ladder system. Radius = 200mm.

| Type description | SS      | HDG     | AL     |
|------------------|---------|---------|--------|
| RZE-R FE-90-100  | 1300948 | 1372067 | 108047 |
| RZE-R FE-90-150  | 1300949 | 1372068 | 108048 |
| RZE-R FE-90-200  | 1300950 | 1372069 | 108049 |
| RZE-R FE-90-300  | 1300951 | 1372070 | 108051 |
| RZE-R FE-90-400  | 1300952 | 1372071 | 108053 |
| RZE-R FE-90-500  | 1300953 | 1372073 | 108055 |
| RZE-R FE-90-600  | 1300954 | 1372074 | 108056 |



## CABLE LADDER RZE-R

Flexible cable ladder with Z-profiled and slotted rungs. The ladder features perforation on the siderails to easily change direction vertically or sideways. Length = 3m.

| Type description | SS      | HDG   | AL     |
|------------------|---------|-------|--------|
| RZE-R CL-100     | 1300941 | 85923 | 108020 |
| RZE-R CL-150     | 1300942 | 85924 | 108021 |
| RZE-R CL-200     | 1300943 | 85925 | 108022 |
| RZE-R CL-300     | 1300944 | 85926 | 108024 |
| RZE-R CL-400     | 1300945 | 85927 | 108026 |
| RZE-R CL-500     | 1300946 | 85929 | 108028 |
| RZE-R CL-600     | 1300947 | 85930 | 108029 |



## SPLICE CONNECTOR

Two splice connectors required for each connection.

| Type description | SS    | HDG   | AL    |
|------------------|-------|-------|-------|
| RZE SC           | 82873 | 85516 | 87372 |



## HINGE VERTICAL

Two hinges required for each connection. Can be adjusted in 4° steps.

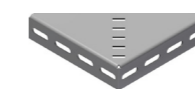
| Type description | SS    | HDG   | AL  |
|------------------|-------|-------|-----|
| RZE HI-VE        | 85490 | 81575 | N/A |



## JUNCTION PIECE

Junction piece for creating t-pieces and crosspieces.

| Type description | SS    | HDG   | AL    |
|------------------|-------|-------|-------|
| RZE JP-TE/CP     | 87973 | 87972 | 86883 |



## FIXING CLAMP

Fixing clamps for clamping on the siderail of the cable ladder to fix to support.

| Type description | SS     | HDG     | AL    |
|------------------|--------|---------|-------|
| RZE FC-40        | 86876  | 1372099 | 87027 |
| RZE FC-CH-30/40  | 85503* | 1372098 | N/A   |





A Group Company of **HILTI**

**Øglænd System AS**  
Engelsvollvegen 264  
N-4353 Klepp stasjon, Norway

**Phone:** (+47) 51 78 81 00  
**E-mail:** [oglaend@oglaend-system.com](mailto:oglaend@oglaend-system.com)

**Order/purchase orders:**  
[ordre@oglaend-system.com](mailto:ordre@oglaend-system.com)

[www.oglaend-system.com](http://www.oglaend-system.com)

