

INTENDED USE

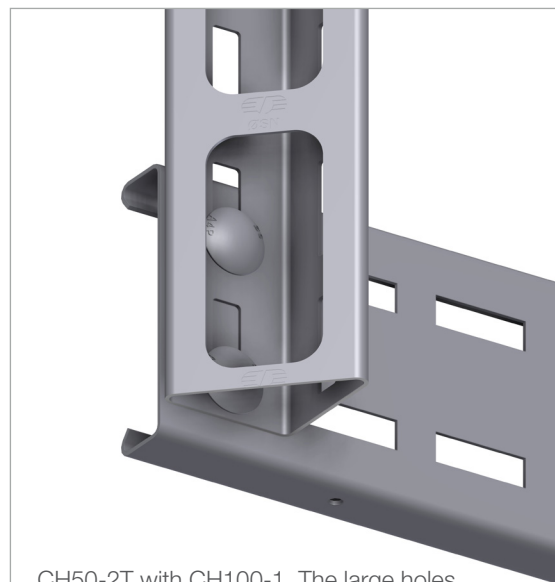
Mekano® CH50-2T in 1.5 mm and 2 mm thickness are triangular shaped, area efficient, light and extremely versatile channels. They are ideal for support of light to medium loads for electro, instrumentation and HVAC applications.

INSTRUCTION FOR USE

Mekano® CH50-2T channels can be fixed together using M10 self locking bolts. The large hole on the channel allows the bolts to be easily fitted.

Channels can be fitted back to back.

Attach the parts loosely with self locking bolts, adjust and tighten securely.



CH50-2T with CH100-1. The large holes on one side of the triangle channel make the channel easy to assemble. The bolts can be fitted from both sides.

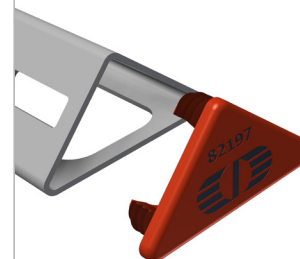


Typical U support.

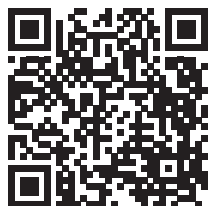
Typical multi discipline support with CH50-2T.



Plastic end protectors are available.



CH50-2T used with flexi bracket to support flat elbow.



User Guide for Bolts:
Recommended Torque