

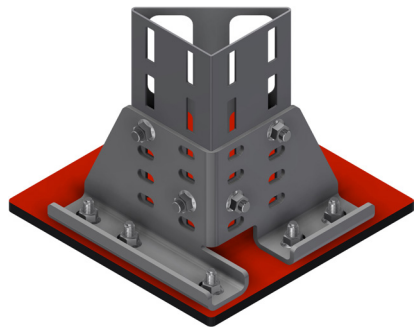
INTENDED USE

Bolted starter brackets for CH50-2T and CH100-2T. Can be bolted to concrete or to threaded doubling plates.

Channels can be fitted vertically and horizontally.

INSTRUCTION FOR USE

Attach the starter to the structure using self locking bolts. Adjust and tighten securely.



FoS compatible version available.
Highly suitable for Hilti X-BT High Load.

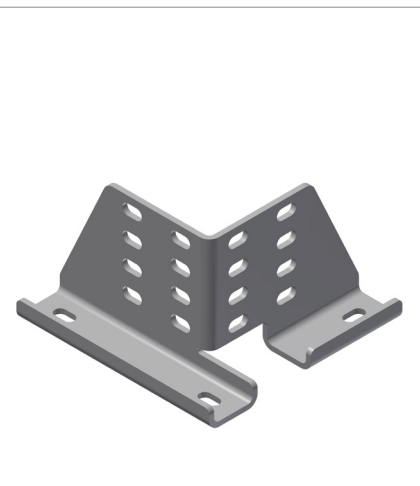
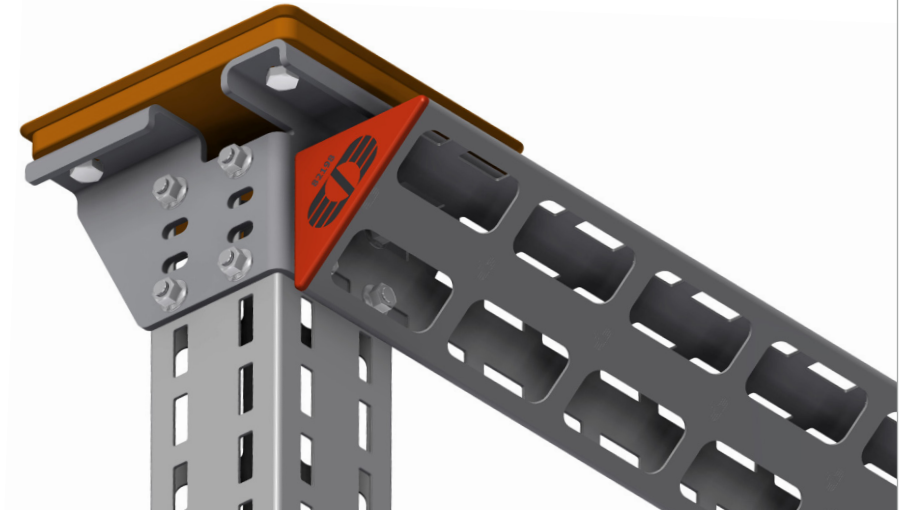


User Guide for Bolts:
Recommended Torque



Fitting introductions
for X-BT

CH100-2T type. Shown with vertical and horizontal channel fitted.



CH100-2T type. Can also be fitted as
“goal post” base.



CH50-2T type. Shown as goal post with
threaded doubling plate.