

INTENDED USE

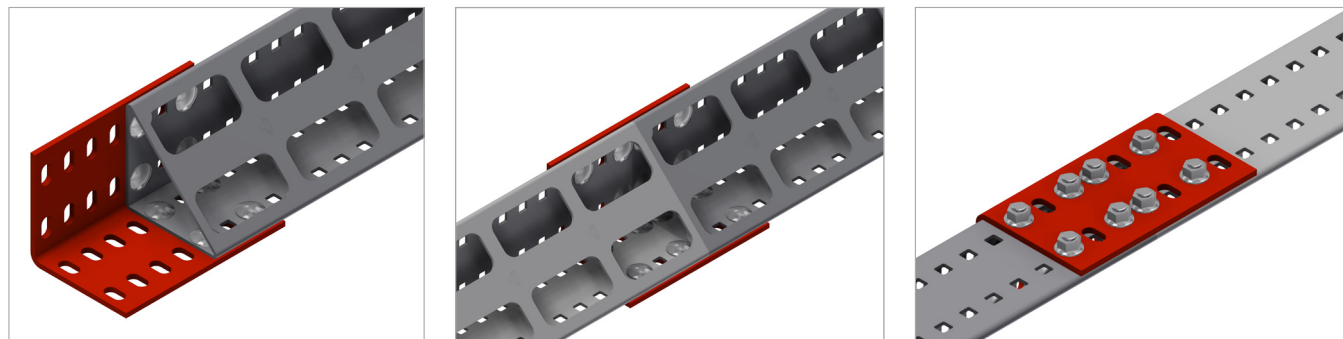
Splice connectors for Mekano® CH100-2T or Mekano® CH100-4 in 5 mm thick material.

INSTRUCTION FOR USE

Note - bolts are not included.

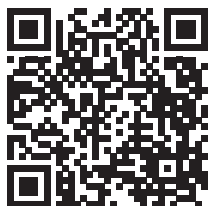
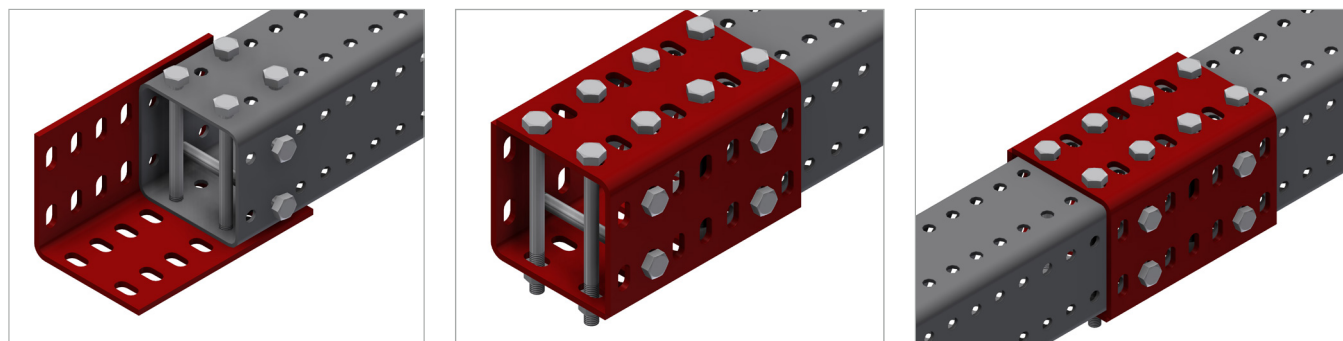
Mekano® CH100-2T

Fit the splice between the sections.
Fix together using M10 self locking bolts.
The large hole on the back of the channel allows the bolts to be easily fitted.
Adjust and tighten securely.



Mekano® CH100-4

Fit two splices between the sections.
Fix together loosely using M10x130 self locking bolts. Adjust and tighten securely.



User Guide for Bolts:
Recommended Torque