

## INTENDED USE

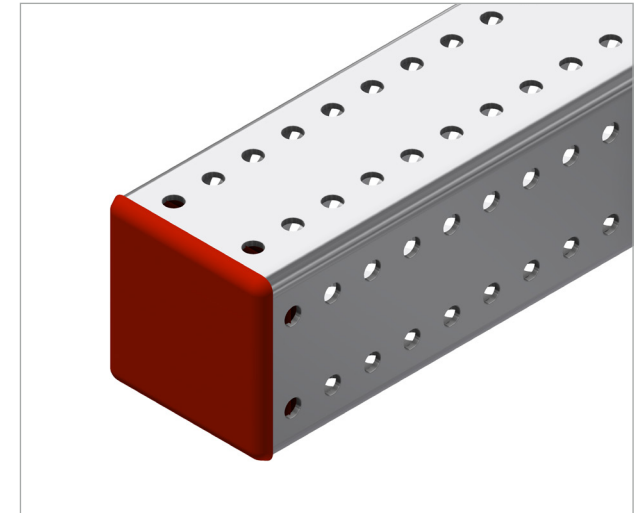
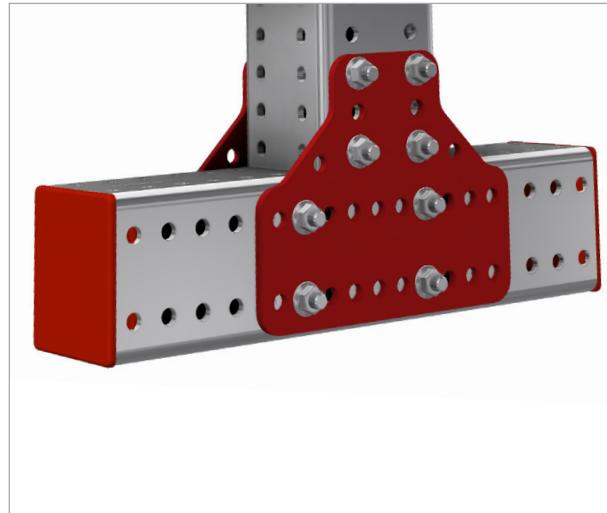
High visibility End Protectors in self extinguishing material for use where Mekano® CH100-4 channels ends have sharp edges or need to be highlighted to avoid collision.

Do not use on the bottom of vertical sections where there is a risk that moisture or contaminants may settle and cause corrosion.

## INSTRUCTION FOR USE

End Caps marked "0" are for 3 mm channel.  
End Caps marked "1" are for 5 mm channel.

Fit the end protector over the channel end and tap lightly in place.



1303293 Marked "0" for 3 mm channel.



1303294 Marked "1" for 5 mm channel.

