

INTENDED USE

Mekano® CH125-2T5 is a triangular shaped, area efficient, heavy duty channel in 5 mm material thickness. This channel is suitable for piping support and for heavy electro, instrumentation and HVAC applications.

INSTRUCTION FOR USE

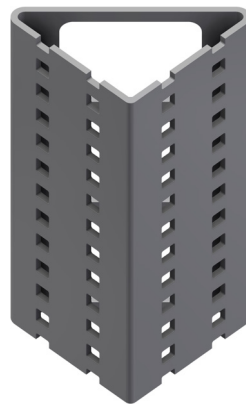
Mekano® CH125-2T5 channels are fixed together using M12 self locking bolts and can be fitted back to back with no extra brackets.

The bolts are easily fitted through the large access holes on the back of the channel section.

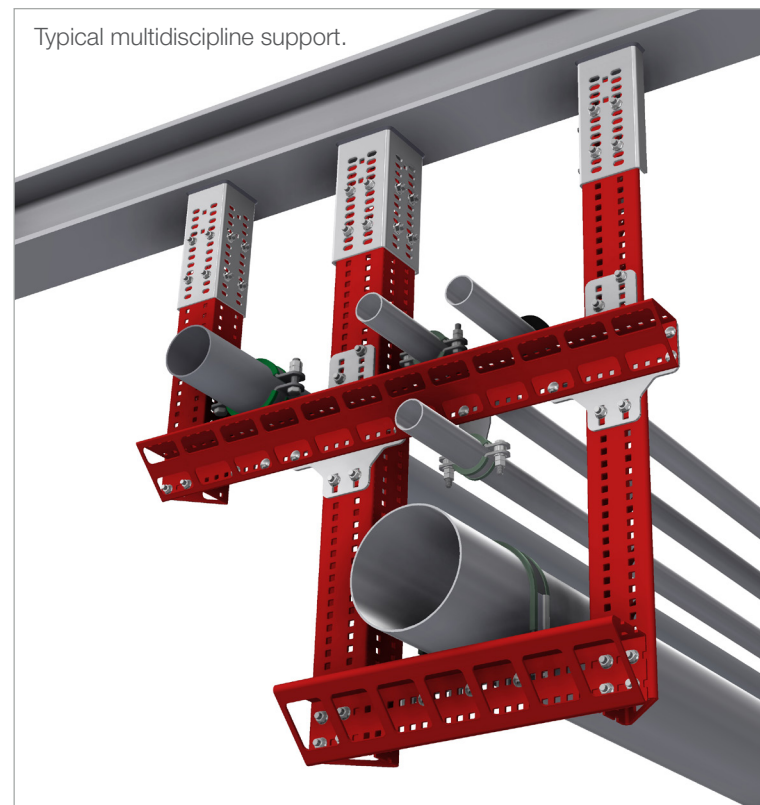
Attach the parts loosely with M12 self locking bolts, adjust and tighten securely.

A range of gusset plates and splices are available for extra support if required.

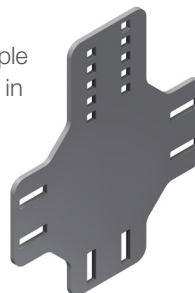
CH125-2T5 channel.



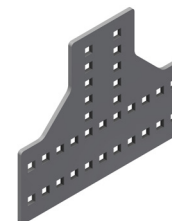
Typical multidiscipline support.



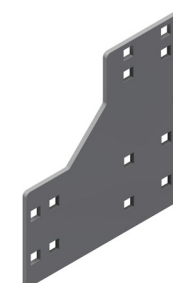
CH125 gusset plate can be used to create X-, T- and L-supports. The Nonie™ principle allows for vertical adjustment in 5 mm increments.



Gusset for T connection.



Gusset for L connection.



User Guide for Bolts:
Recommended Torque