

INTENDED USE

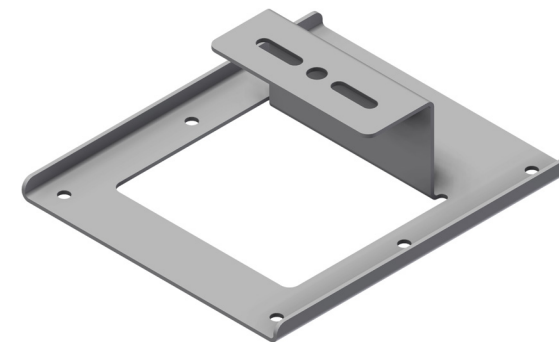
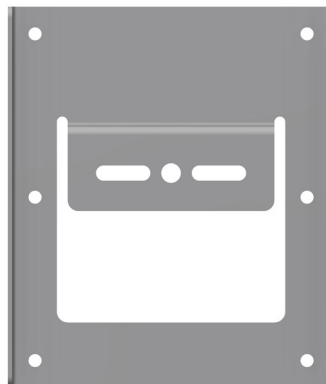
Wall support bracket for supporting low-load SPB cable trays.

Intended for fastening to “noise reduction walls” typically made up by a thin metal sheet attached to a sound absorptive layer. This is only suitable therefore for light loads.

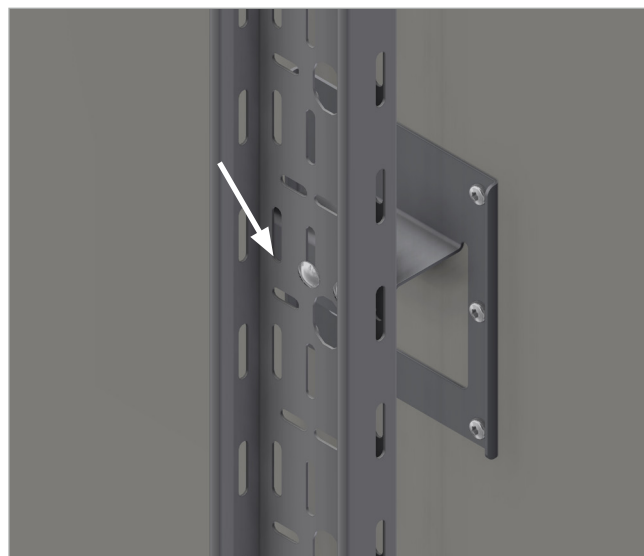
INSTRUCTION FOR USE

The bracket is fastened to the wall using 6 fasteners suitable for the wall construction. Adhesive can also be used where permitted.

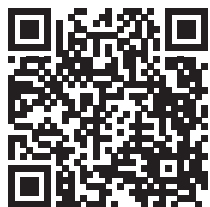
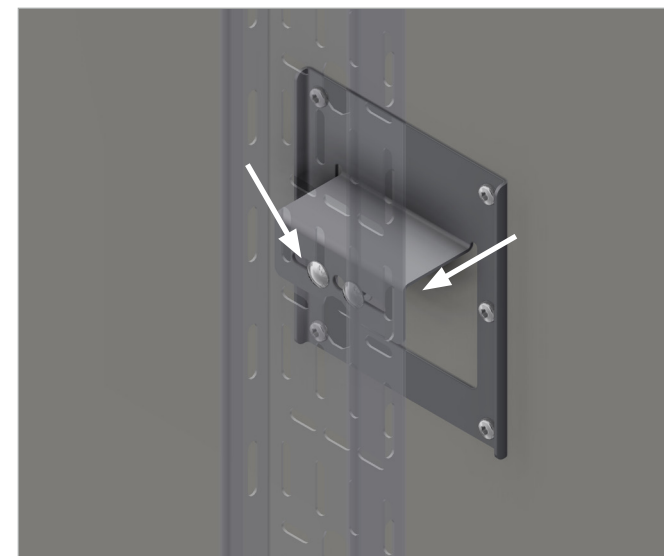
SPB cable tray can then be fixed to the Wall Support Bracket using M6 fasteners, see examples shown.



SPB-RF cable tray fitted to the Wall Support Bracket using one M6 fastener.



SPB-RF cable tray mounted onto the Wall Support Bracket using two M6 fasteners.



User Guide for Bolts:
Recommended Torque