

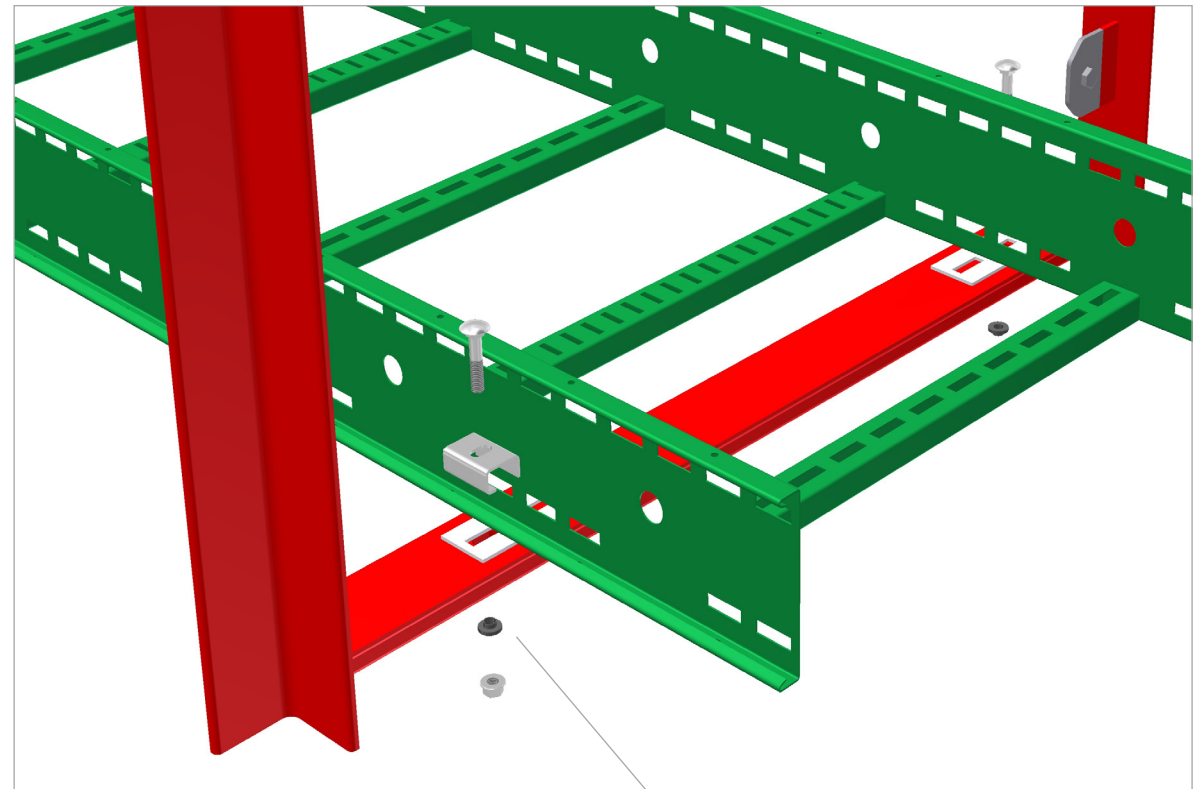
INTENDED USE

Used to prevent galvanic corrosion from metal to metal contact. The sleeve insulates the bolt from the assembly in typical applications such as insulating cable ladders of different material to the support, and when fitting light fixings.

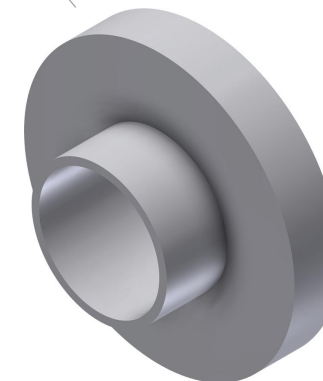
INSTRUCTION FOR USE

There are several different fitting possibilities, including:

The sleeve is inserted into the fixing hole, the bolt is inserted and a PTFE washer used on the nut end and fastened in place. The fastener and the parts being assembled are then insulated from one another. (Bolt and additional washer are not supplied). On thicker materials, two sleeves can be used face to face to insulate the parts being fixed and the bolts. If necessary, additional PTFE washers can also be used.



Use matching material washers or PTFE / Fibre washers as necessary.



User Guide for Bolts:
Recommended Torque