

INTENDED USE

Splice connector with an expansion zone for attaching long runs of TOE/LOE ladders together. The expansion zone prevents deformation of the ladder due to expansion and contraction due to temperature variations. A 100 m long ladder in stainless steel can expand 1.6 mm for each 1°C. A 100 m long ladder in HDG can expand 1.2 mm for each 1°C.

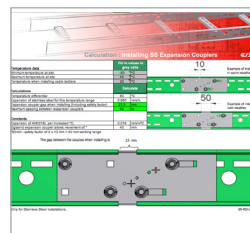
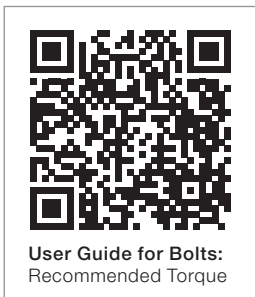
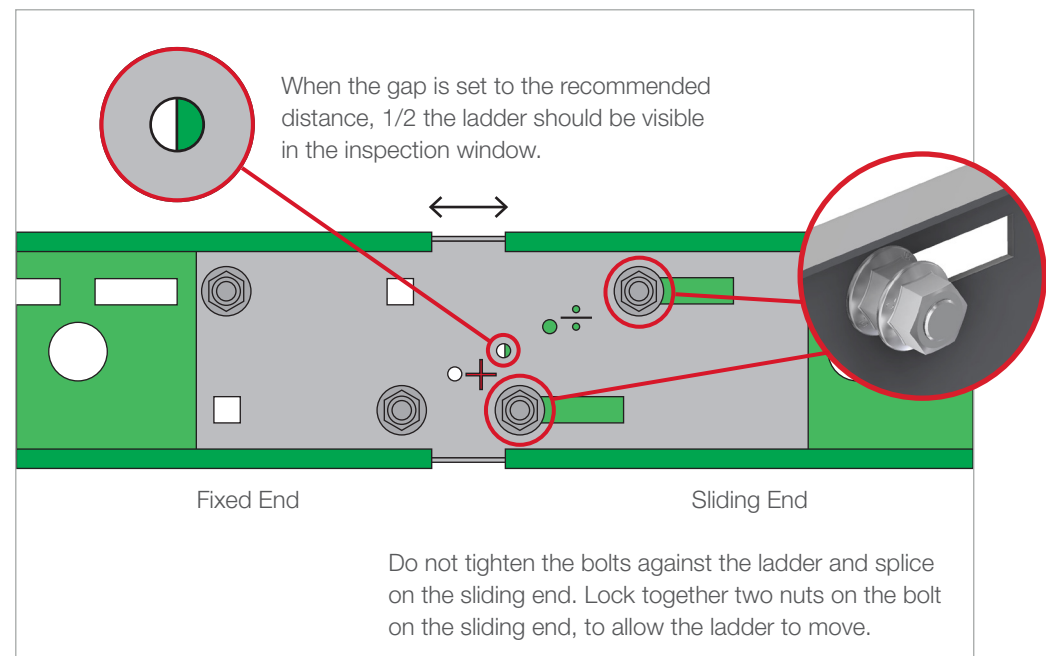
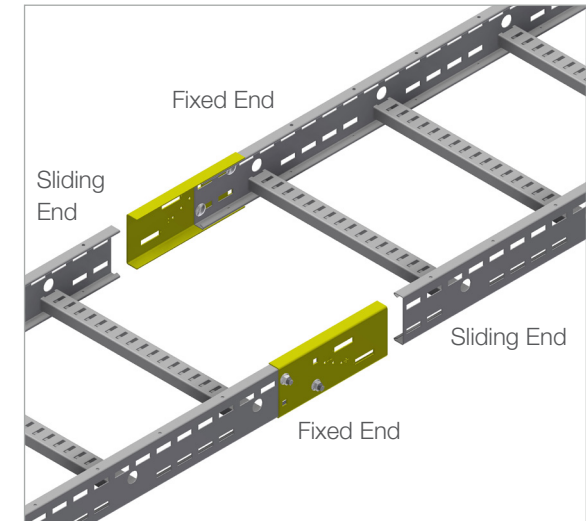
INSTRUCTION FOR USE

Attach the parts together loosely using self locking bolts. Securely attach the bolts on the fixed end with square hole fixings as shown (diagonal fitting).

Find the temperature range for expected operation and the temperature when fitting. Use Oglænd calculator to find the maximum distance between expansion splices, and distance between the ladders for fitting.

Adjust the ladders to the recommended gap between the ladders. At this distance, the next ladder should be 1/2 way visible in the inspection hole. Check that the bolts on the elongated holes are fitted in corresponding holes on the ladder that allow movement in the desired direction and range.

Lock two self locking nuts together on the sliding end without tightening them onto the ladder. Attach earth link jumpers if necessary to maintain electrical continuity (See ØI-RD-UG-EN-0004).



Ask for our Øglænd calculator for splice fitting data.