

INTENDED USE

90° Angle Brackets for assembling cable trays for tubing applications, both vertically and horizontally.

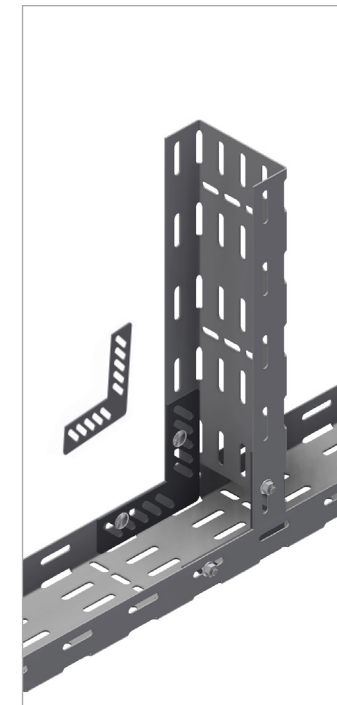
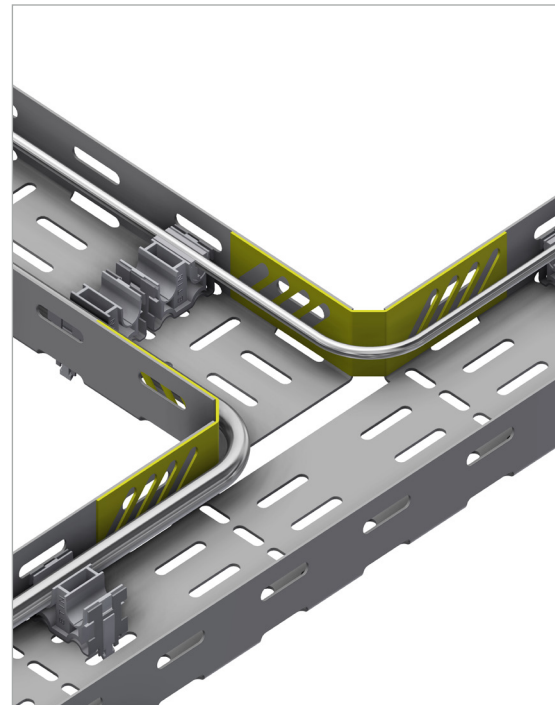
INSTRUCTION FOR USE

Vertical bracket forming vertical 90° Tee:

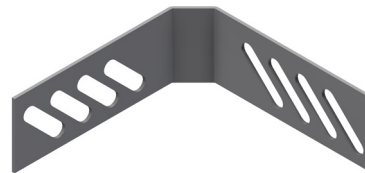
- Attach brackets loosely on inside (or outside) with self locking bolts. Adjust and tighten securely.

Horizontal bracket forming horizontal Tee:

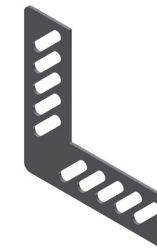
- When intersecting the side rail(s) of another tray, the tray running continuously needs to be cut.
- Mark the junction and using a fine cutting wheel (1 mm), remove the width of the ladder + 5 mm from the side rails.
- Remove any rough edges.
- Fit the two parts with the brackets on the inside. Bolt loosely together with self locking bolts.
- Adjust all parts, then tighten the bolts securely.



Horizontal bracket.



Vertical bracket.



User Guide for Bolts:
Recommended Torque