

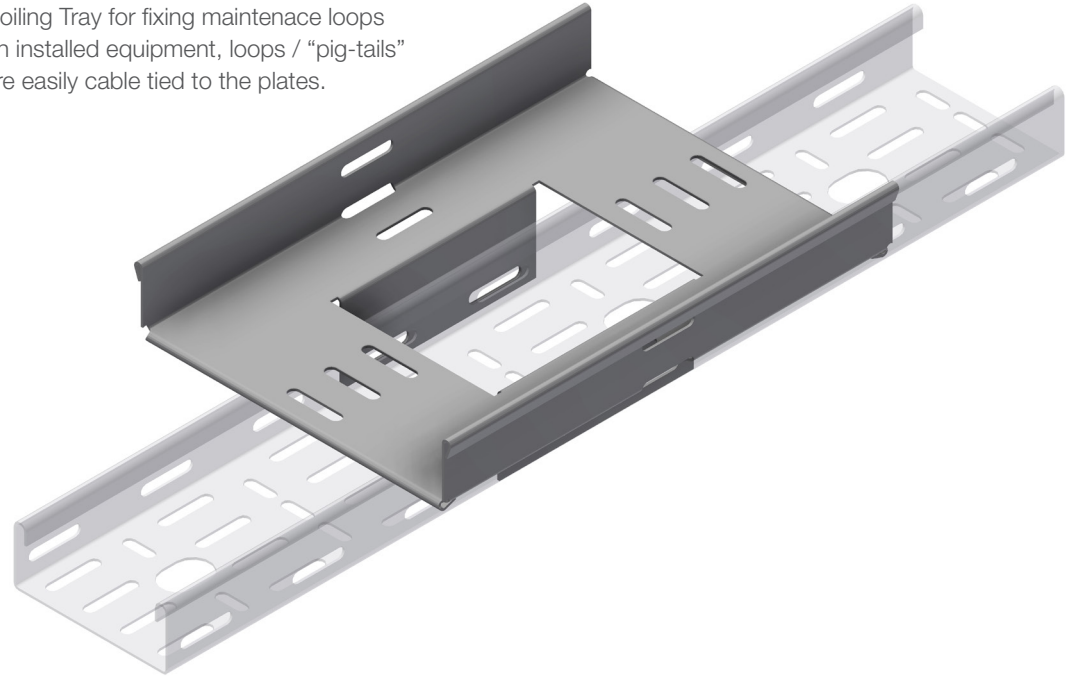
## INTENDED USE

Single part design, Versatile spare cable fixing plate for standard SPB-RF in all heights.

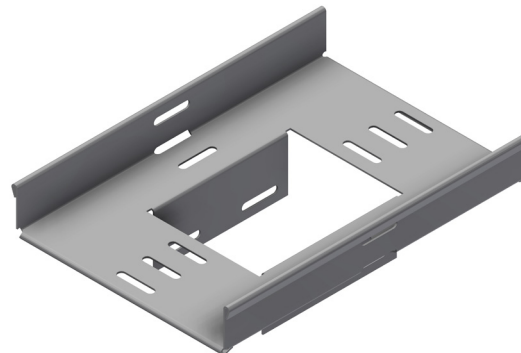
## INSTRUCTION FOR USE

Attach the tray loosely to the outside of the cable tray using M6 self locking bolts (not included). Make sure to attach the bolts from the inside to avoid damage to cables. Adjust and tighten securely.

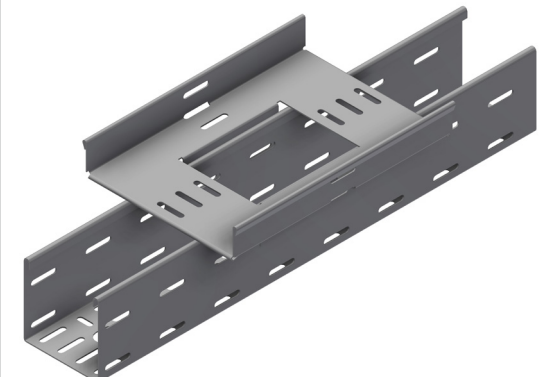
Coiling Tray for fixing maintenance loops on installed equipment, loops / "pig-tails" are easily cable tied to the plates.



Single part design that suits SPB-RF Cable tray with 100 mm width.



Suits all heights of SPB-RF tray



User Guide for Bolts:  
Recommended Torque