

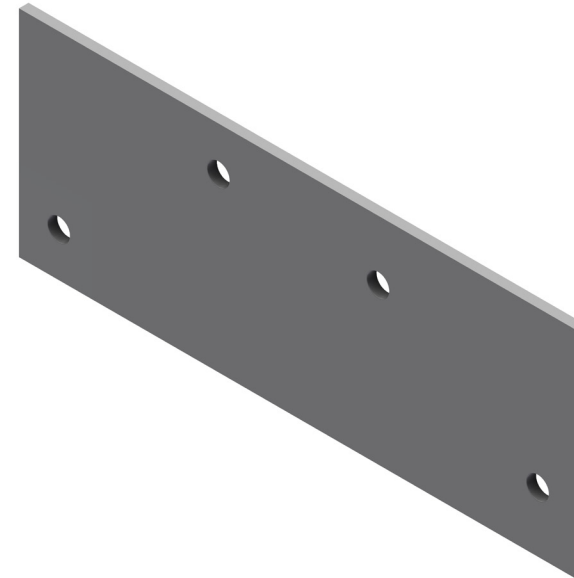
INTENDED USE

The Entire FTE-80 product range has been updated (refer to product bulletin). During this transitional time there may be compatibility issues when previously manufactured products are joint together with the new updated products. To help overcome this problem we have developed a range of splice plates and splice angles that can be used to join old and new items.

INSTRUCTION FOR USE

Check to see if products that are being joined together are a mix of the of the old design and new design of FTE-80 tray. To do this check the vertical distance between the pre-drilled perforations. The new updated design brings these perforations closer together vertically when compared with the old design.

Select the splice plate or splice angle required for the connection type required. Place the splice plate or splice angle at the required location and check to make sure the perforations of this splice plate align with the pre-drilled perforations of the cable tray/fitting on both sides of the joint. Install the splice plate using the bolts sets supplied with the product.



User Guide for Bolts:
Recommended Torque



Splice point where old and new product meet (note, differences in perforation location on each side of joint).



Splice connector in position (perforations on splice plate and tray item are aligned).



Fully installed splice connector with bolt sets.