

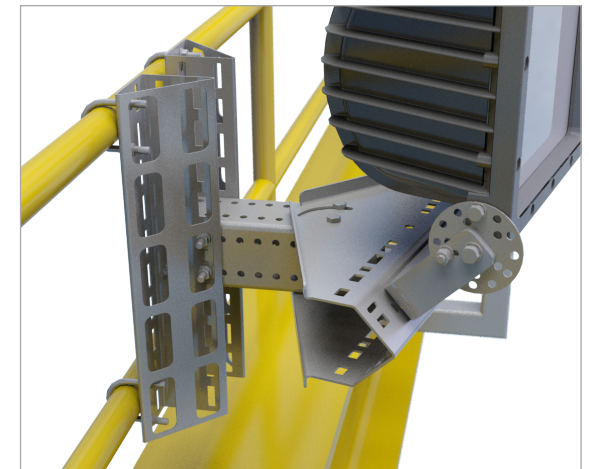
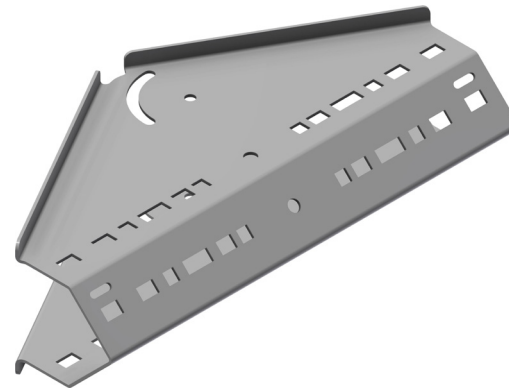
## INTENDED USE

Versatile floodlight support bracket. Together with Mekano® CH100-4 channel, it can be fixed to ceilings, walls, poles and handrails. Four main fixing positions give wide adjustment possibilities. Two floodlights can be supported and adjusted from one bracket.

## INSTRUCTION FOR USE

Assembly order depends on the situation. The adjustment slot gives 105° in each direction by reversing the bracket. Generally, assemble the parts loosely. Adjust and tighten securely.

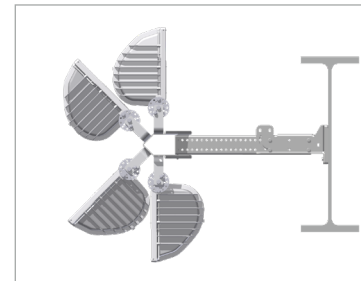
The Floodlight Support Bracket is available with a range of accessories, for example starter brackets with hinge function to ease service, and handrail support brackets. Please contact us for more details.



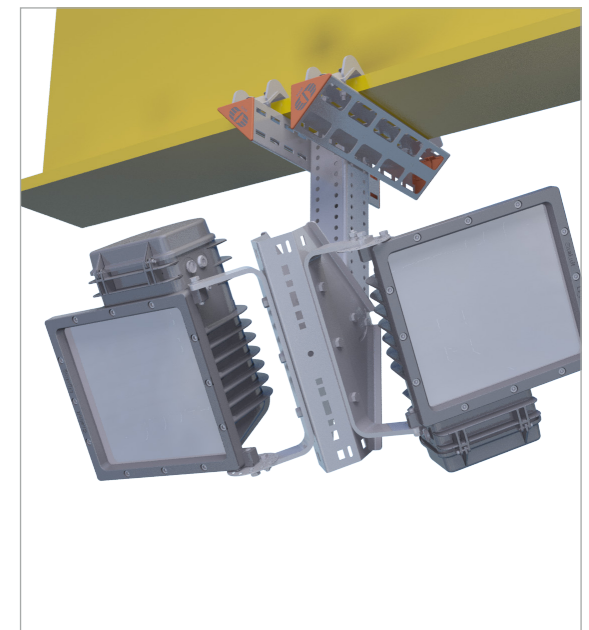
Example of Handrail fitting.



Hugely adaptable design.



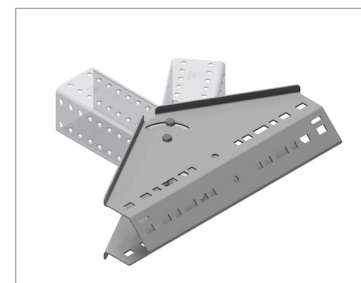
Four fixing surfaces.



Fitted from H-beam. Possibility to fix two floodlights.



Fitted to vertical pole.



Adjustment slot with 210° rotation.



User Guide for Bolts:  
Recommended Torque