

INTENDED USE

Provides support for a pipe and allows it to slide, or keep it in place with added accessories. Adjustable from 87.5 mm to 112.5 mm in 2.5 mm steps.

Instruction for use

Center the shoe on the selected channel and slide it under the pipe you want to support. Raise the middle part up to the pipe and insert 2x M12 bolts in the open holes and secure with nuts.

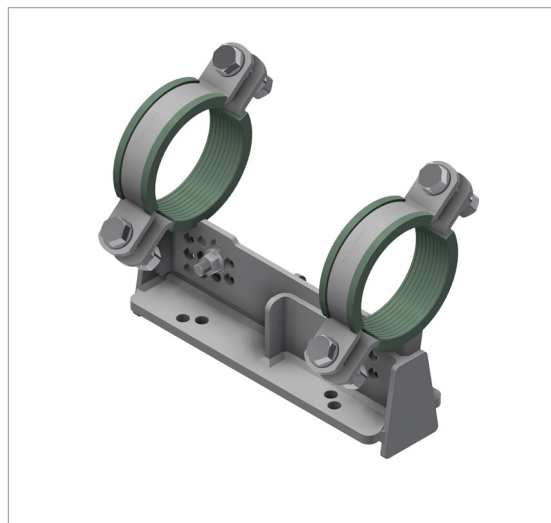
Install the top part of the clamp and secure with bolts, nuts and washer, making sure the clamped shoe is fastened properly to the pipe.

If the pipe has an incline/decline, tilt the middle part as needed and secure with bolts and nuts.

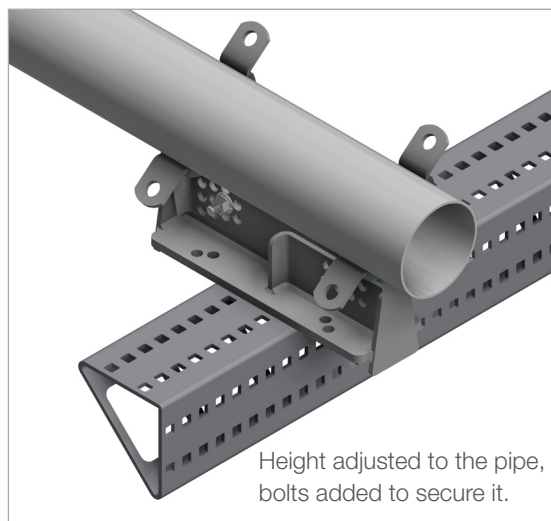
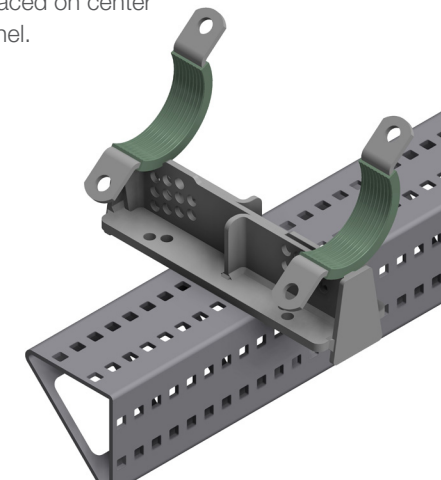
Add accessories to achieve needed restraints.



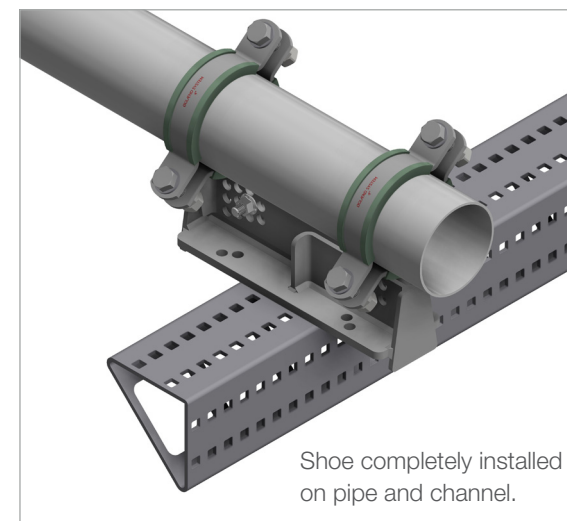
User Guide for Bolts:
Recommended Torque



Shoe placed on center of channel.



Height adjusted to the pipe,
bolts added to secure it.



Shoe completely installed
on pipe and channel.