

## INTENDED USE

To be used with short clamped shoes to provide an anchor function or Line guide + Hold down with 2 mm gap. For clamped shoes with 15 mm thick Base Plate.

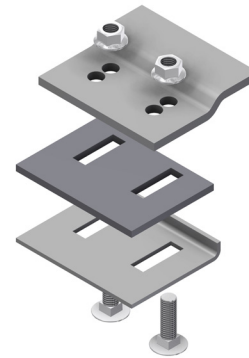
## INSTRUCTION FOR USE

For 2 mm gap, use all three plates and install as shown.

For anchor function, remove bottom plate and install directly on to the baseplate of the shoe. Tighten bolts so that the shoe is secured in all directions by friction.

For CH 100-4 use M10x130 Hex bolt for all.

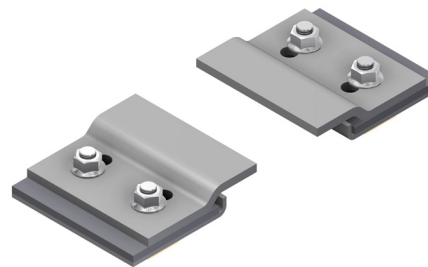
Assembly with 2 mm gap.



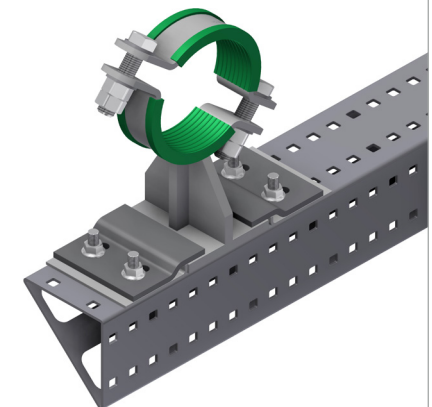
Assembly with 0 mm gap (anchor).



Item assembled with 2 mm gap.



Item assembled on channel with 2 mm gap.



User Guide for Bolts:  
Recommended Torque