

INTENDED USE

To give a pipe a low friction surface to rest on, and protecting surrounding steel from heat exchange from the pipe.

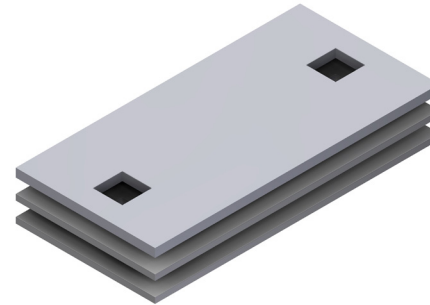
INSTRUCTION FOR USE

Use 2x M10 bolts to bolt the PTFE pad to your channel of choice. Use the accompanying shim plates if needed.

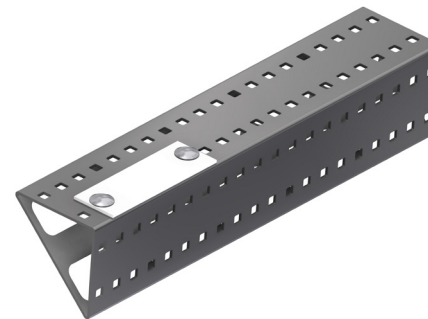
Shim plates: 2x 2 mm

Temperature range: -46°C to +150°C

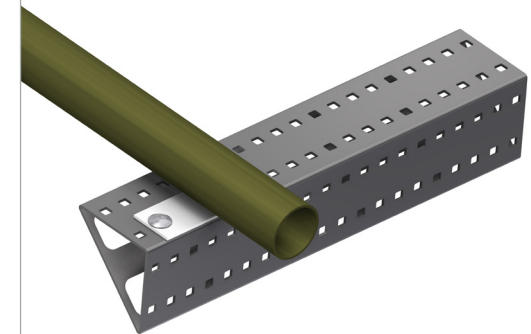
PTFE Pad with accompanying shim plates.



PTFE Pad installed on channel.



PTFE Pad installed on channel with pipe.



User Guide for Bolts:
Recommended Torque