

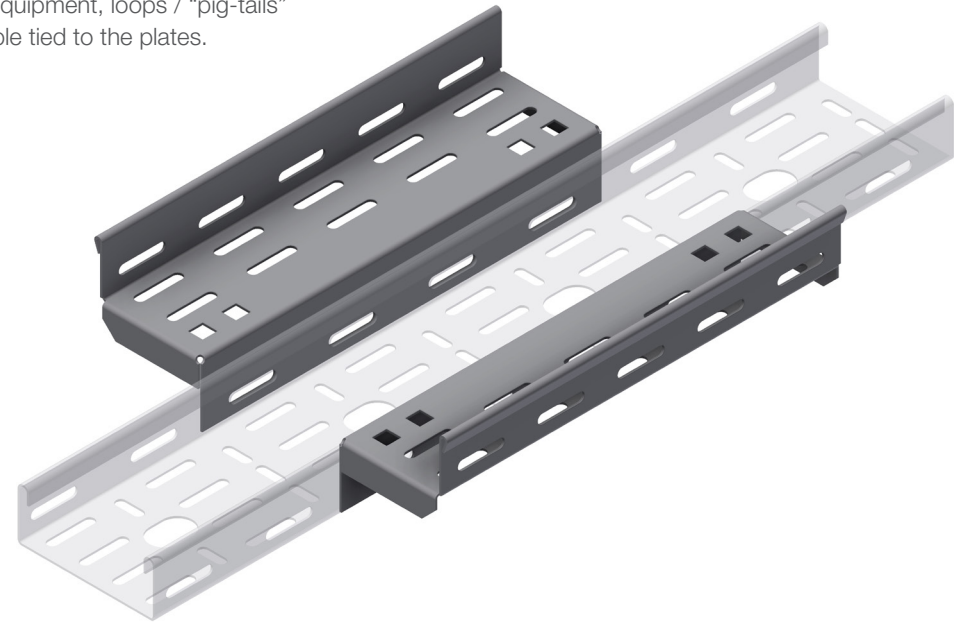
INTENDED USE

Versatile spare cable fixing plates for standard SPB-RF in all heights. The two part design suits widths from 50-600 mm.

INSTRUCTION FOR USE

Align each part parallel to the cable tray. Attach the trays loosely to the outside of the cable tray using M6 self locking bolts (not included). Make sure to attach the bolts from the inside to avoid damage to cables. Adjust and tighten securely.

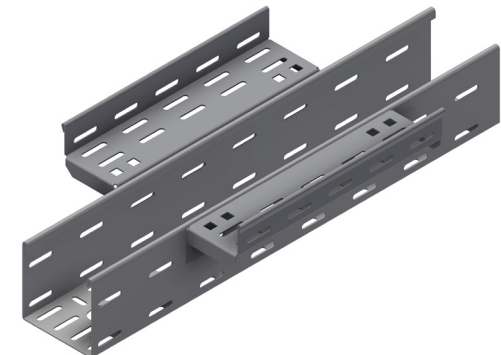
Coiling Tray for fixing maintenance loops on installed equipment, loops / "pig-tails" are easily cable tied to the plates.



Supplied as pair



Suits all heights SPB-RF Tray



User Guide for Bolts:
Recommended Torque