

INTENDED USE

Welded brackets suitable where space is limited or compact design is required. Compatible with Mekano® CH50-2T. Channel can be fitted in both directions and both sides of the bracket.

Version available for stainless steel architecture wall.

INSTRUCTION FOR USE

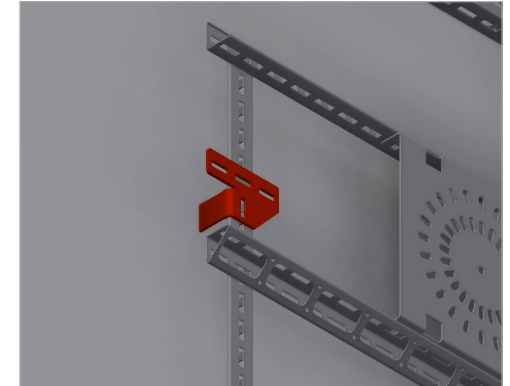
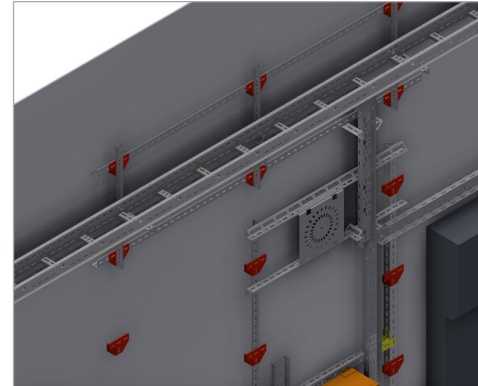
Weld the bracket to the structure and paint. For architecture wall weld the bracket directly to wall.

The bearing face can be masked with heavy duty tape to maintain a earthing surface post paint. Suitable for use with M10 self locking bolts.

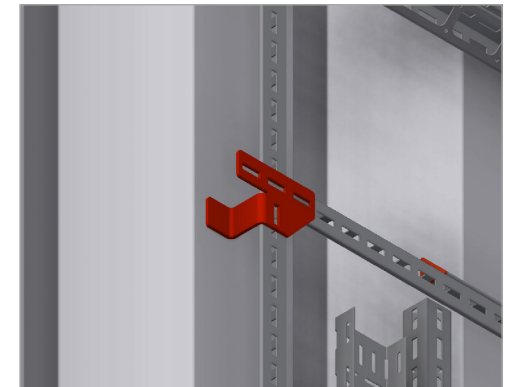
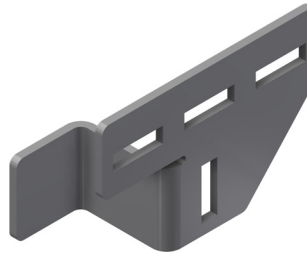
Alternative

Sand/grind the paint on the bolting surfaces to use as earth connection as required

Bracket for bulk head



Bracket for achitecture wall



User Guide for Bolts:
Recommended Torque