

INTENDED USE

A bracket suitable for fitting loudspeakers, flash beacons, or other equipment. The bracket is available in types suitable for welding or bolting. The bracket can also be used to support a cable tray up to 150 mm wide.

INSTRUCTION FOR USE

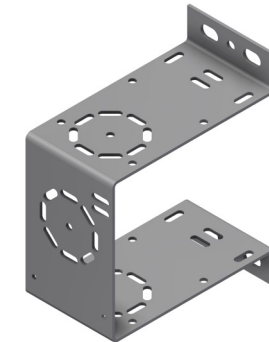
Weld or bolt the bracket to the wall or structure depending on the type.

For bolting, use M10 self locking bolts or FoS Hilti S-BT M10 for direct fastening on steel. Use M8 bolts for fastening to support magnets. Adjust and tighten securely.

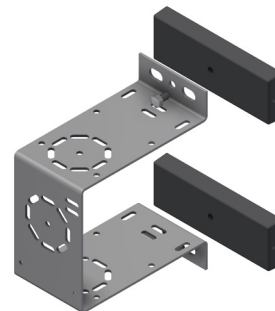
Welded type



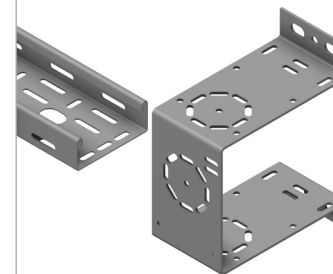
Bolted type - FoS compatible



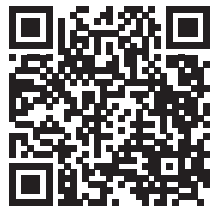
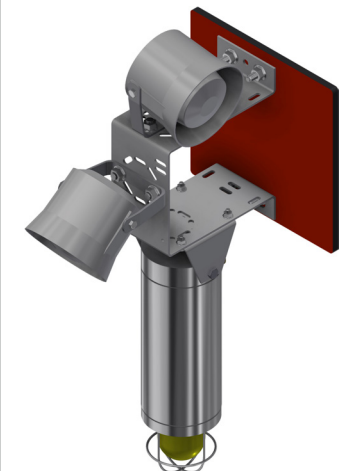
Holes for bolting to M8 support magnets.



Support a cable tray or ladder up to 150 mm wide through the bracket or on top. A choice of holes are available for cable loop fixing.



FoS application using Hilti S-BT M10.



User Guide for Bolts:
Recommended Torque



Fitting introductions
for S-BT