

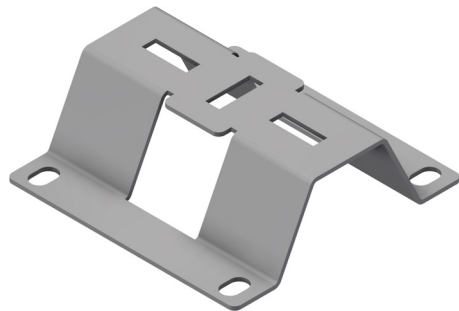
INTENDED USE

Bolted brackets for light weight support suitable where space is limited or compact design is required. Compatible with Mekano® CH50 2T.

INSTRUCTION FOR USE

Attach to structure using suitably graded bolts. We recommend using Øglænd System metric anti vibration flange nuts. Depending on the type, tighten to the specified torque.

Suitable for post paint installation using Hilti S-BT.



User Guide for Bolts:
Recommended Torque



Fitting introductions
for S-BT

